

# Introduction To Solfege

Compiled by  
Angelo Natalie

## C Major Scale - Solfege and scale degree numbers

Musical notation for the C Major Scale. The notes are: Do, Re, Mi, Fa, Sol, La, Ti, Do, Do, Ti, La, Sol, Fa, Mi, Re, Do. Below the notes are the corresponding scale degree numbers: 1, 2, 3, 4, 5, 6, 7, 1, 1, 7, 6, 5, 4, 3, 2, 1.

## 5 Are You Sleeping? in C

Musical notation for the song 'Are You Sleeping?' in C major. The notes are: do, re, mi, do, do, re, mi, do, mi, fa, sol, mi, fa, sol, sol, la, sol, fa, mi, do, do, sol, do, do, sol, do. Below the notes are the corresponding scale degree numbers: 1, 2, 3, 1, 1, 2, 3, 1, 3, 4, 5, 3, 4, 5, 5, 6, 5, 4, 3, 1, 1, 5, 1, 1, 5, 1.

## 13 Twinkle Twinkle in F

Musical notation for the song 'Twinkle Twinkle' in F major. The notes are: do, sol, la, sol, fa, mi, re, do.

Musical notation for the song 'Twinkle Twinkle' in F major. The notes are: sol, fa, mi, re, sol, fa, mi, re.

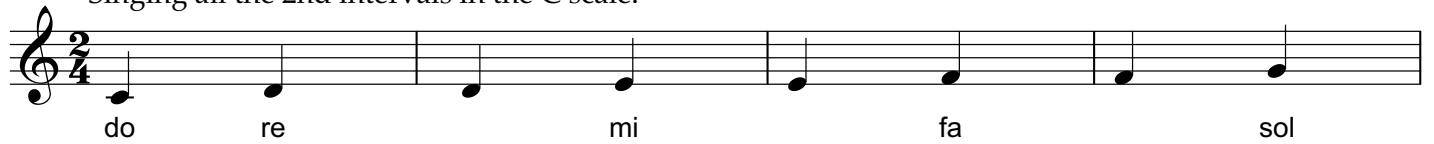
Musical notation for the song 'Twinkle Twinkle' in F major. The notes are: do, sol, la, sol, fa, mi, re, do.

## 25 Mary Had A Little Lamb in F

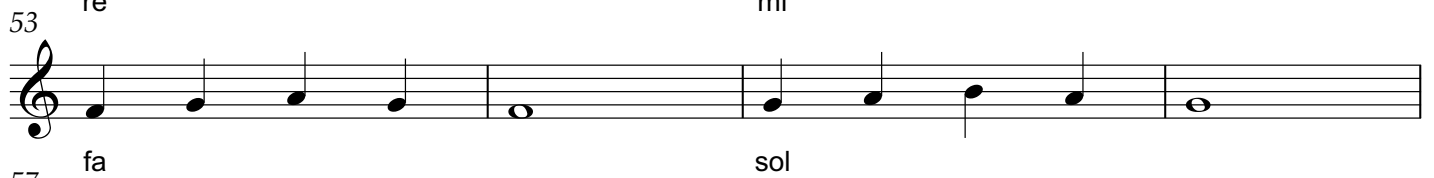
Musical notation for the song 'Mary Had A Little Lamb' in F major. The notes are: mi, re, do, re, mi, re, mi, sol.

Musical notation for the song 'Mary Had A Little Lamb' in F major. The notes are: mi, re, do, re, mi, re, mi, re, do. The piece ends with a 2/4 time signature.

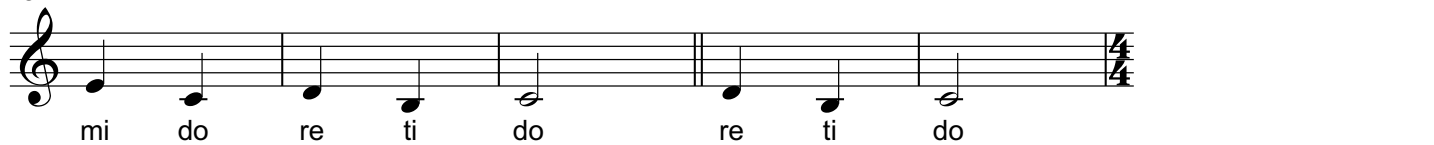
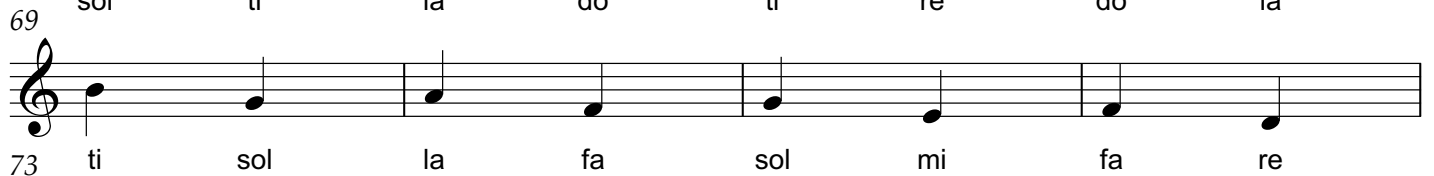
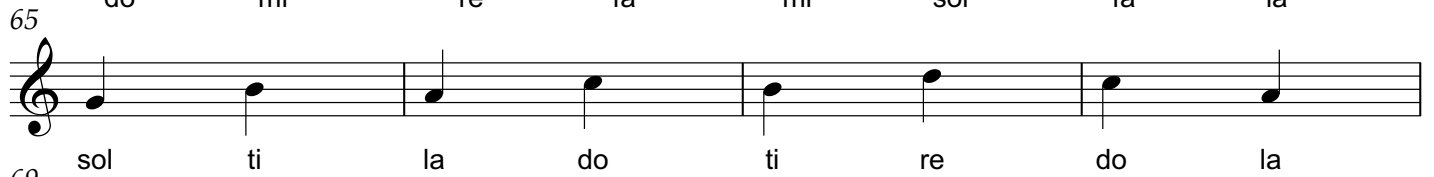
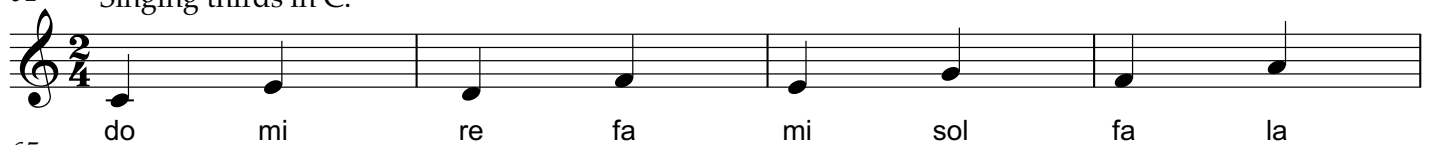
33 Singing all the 2nd intervals in the C scale.



45 Melodic shape going up in C.



61 Singing thirds in C.



Diatonic Triads in C (diatonic = involving only notes in the key)

78 **I** C **ii** Dm **iii** Em **IV** F

do mi sol re fa la mi sol ti fa la do

82 **V** G **vi** Am **viidim** B° **I** C

sol ti re la do mi ti re fa do mi sol

(chromatic = involving a modification of the normal scale by the use of accidentals i.e., flats, sharps, naturals)